



Dyslexia Parents Workshop

Orrets Meadow School

<sup>w</sup>Sue Calveley

Education Quality  
School Improvement Services

EQ

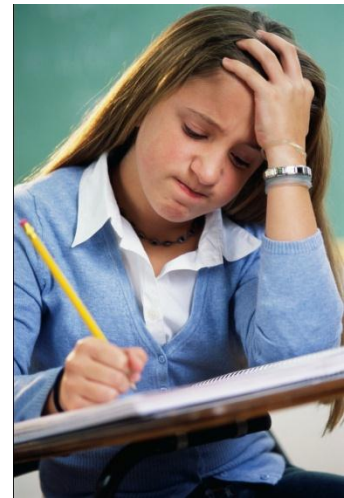
# What is Dyslexia?

Dyslexia is a learning difficulty that primarily affects the skills involved in accurate word reading and spelling



You may notice your child:

- ❑ confuses words was/saw, on /no,
- ❑ finds it difficult to find the correct word
- ❑ has memory, organisational problems
- ❑ is slow to put words to paper.



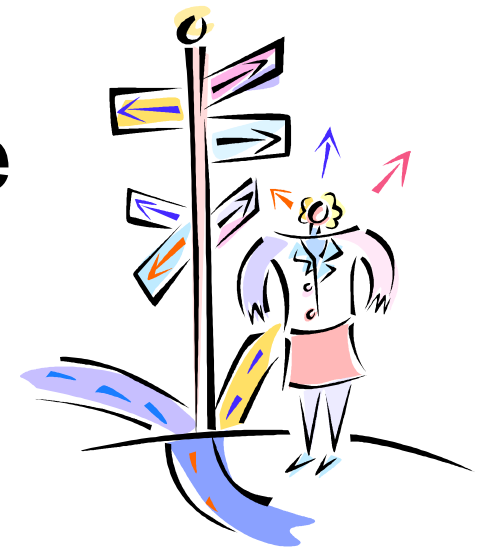
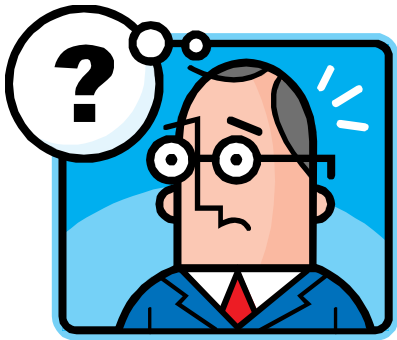
# Dyslexia may affect:

- The development of the ability to remember what is heard or seen in sequence.
- The ability to identify sounds in words, eg. Rhymes, similar sounds and syllables.
- Speed of reading and understanding
- Concentration and co-ordination
- The ability to put things in order eg; days, months,
- Letter and number reversals

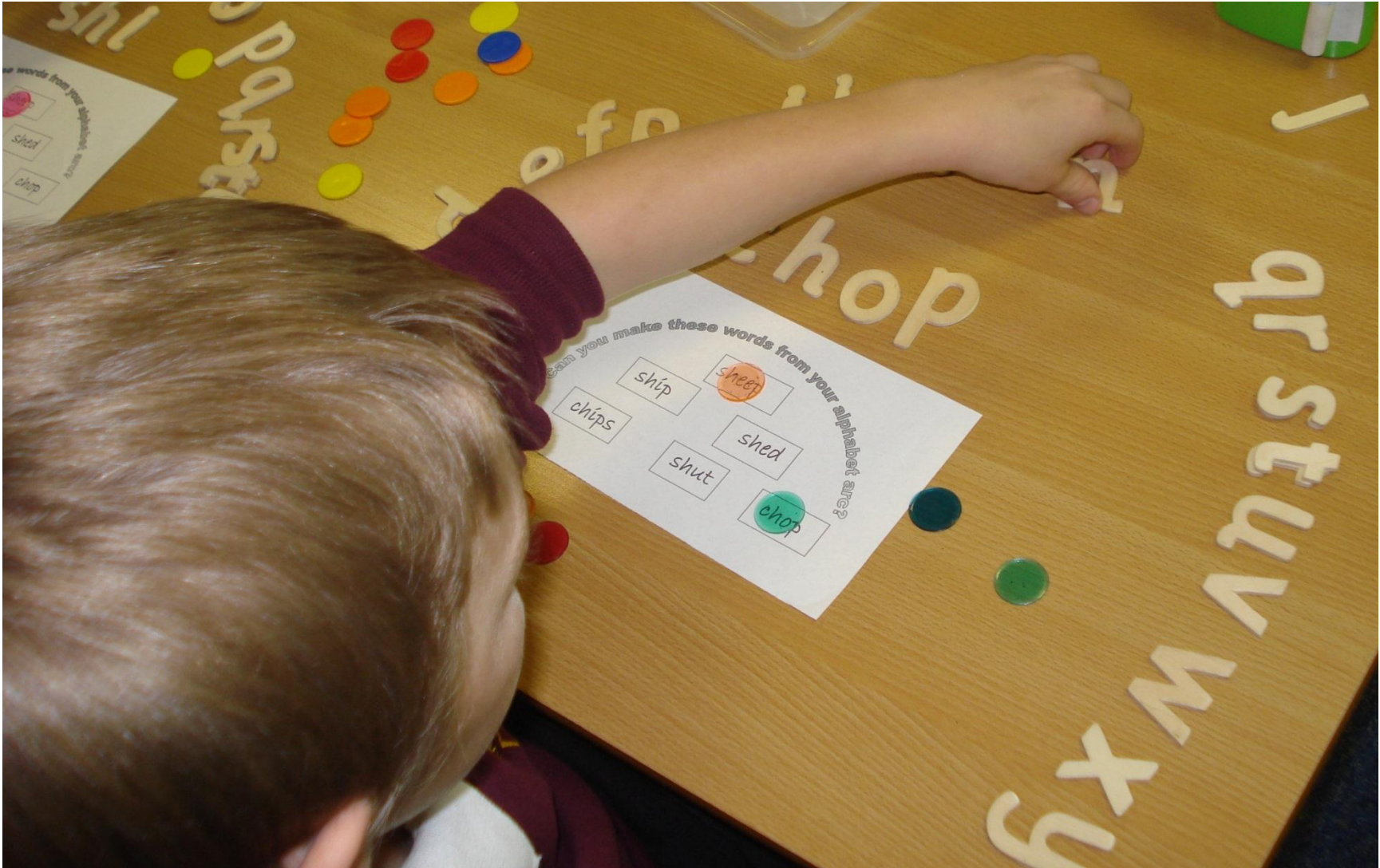
# What is it like to have Dyslexia?

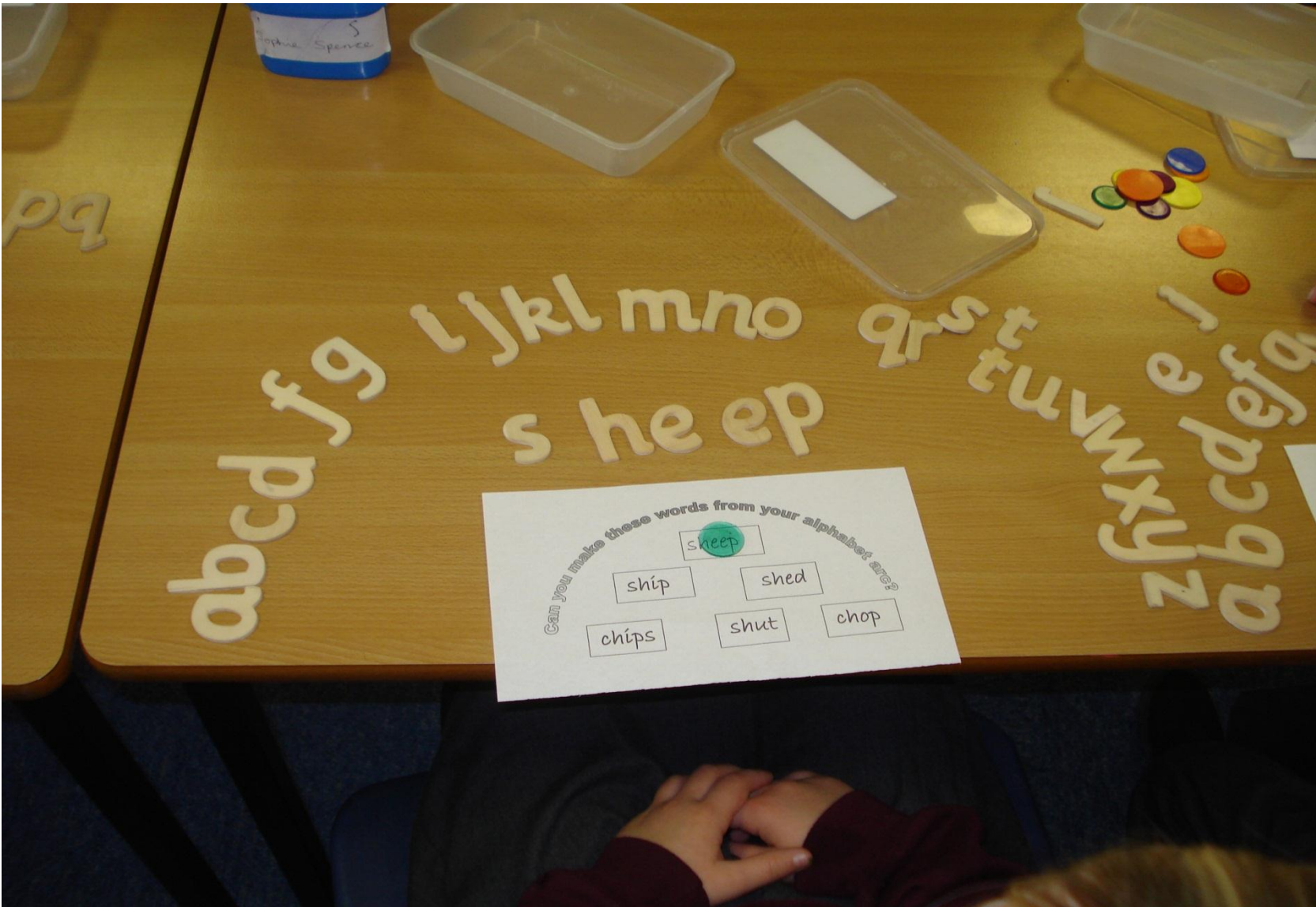
<http://www.youtube.com/watch%3Fv%3DIEpBujdee8M>

A clip from you tube



Multi - sensory learning





abcd f g

i j k l m n o

r s t

u v w x y z  
a b c d e f g

s h e e p

Can you make these words from your alphabet are?

sheep

ship

shed

chips

shut

chop





# Chant the Alphabet Rap

- Double click and scroll down to activate



Teaching the  
Alphabet

[www.spelling city.com](http://www.spellingcity.com)

# Use of mnemonics

**B**ig

**E**lephants

**C**an

**A**dd

**U**p

**S**ums

**E**asily

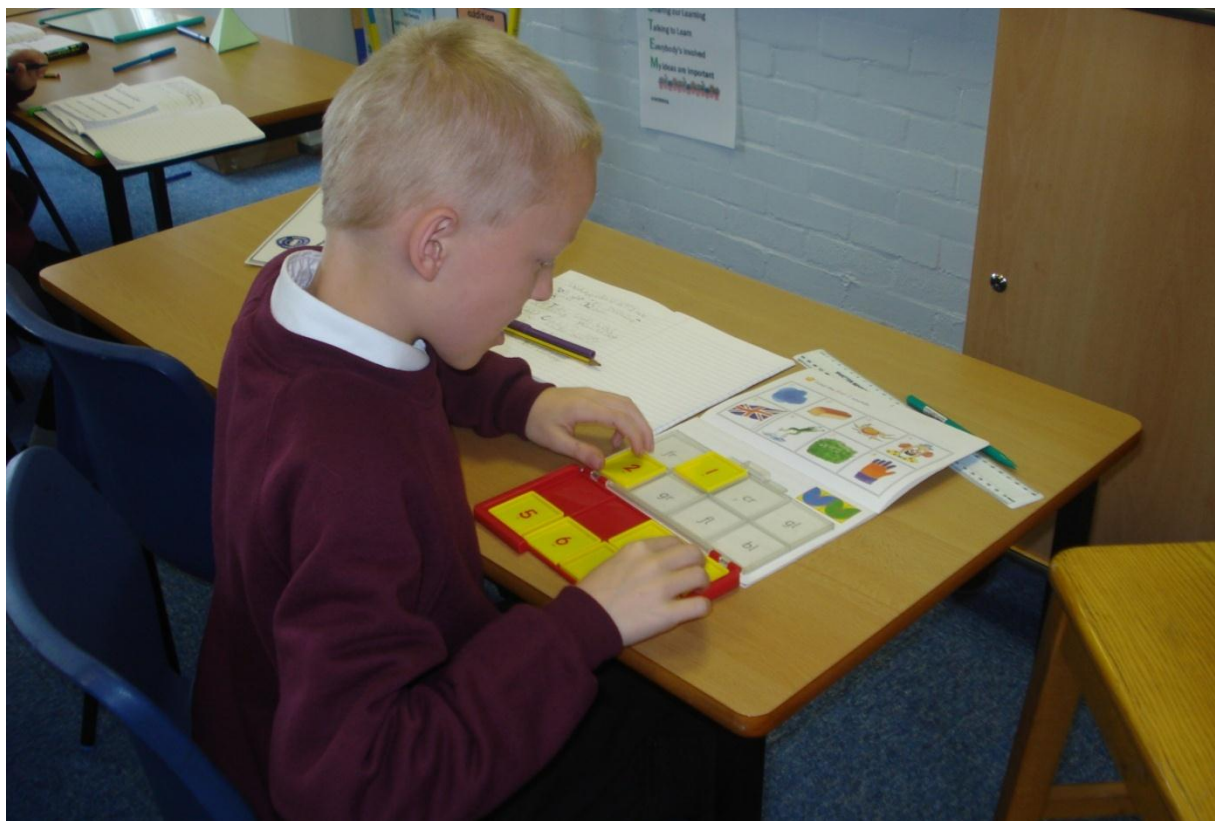


**PHOTOGRAPHS OF  
CLASS BASED LEARNING  
AT ORRETS MEADOW**

# Reading



# Stile tray



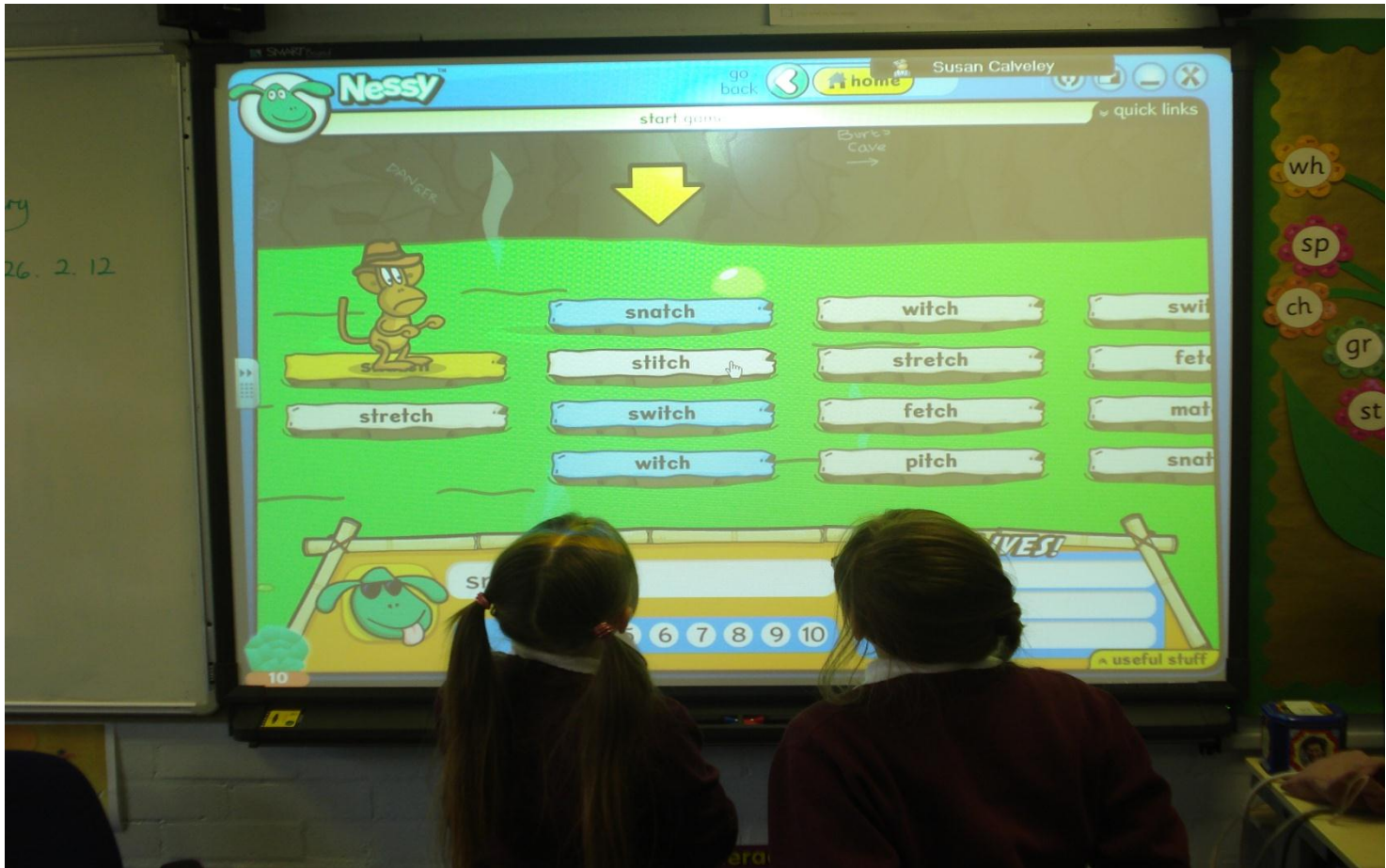
# Phonic bingo





# Using Literacy Activity Builder to make Keyword Word Searches





waist  
raih

Find the word 

|  |  |  |   |
|--|--|--|---|
|  |  |  |  |
|   |   |   |   |

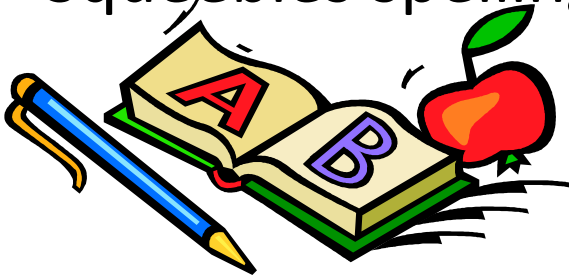
2

|   |       |   |      |
|---|-------|---|------|
| 1 | waist | 5 | 1    |
| 6 | 4     | 3 | sail |
| 2 |       |   |      |

8

# Useful Apps for I pads

- Hairy letters ( from Nessy SpLd program)
- Pocket Phonics
- Elephonics
- Uk alphabet
- Squeebles spelling



# Homework

- Read with your child each night
- Practice your probe
- Spellings
- Maths (usually once a week)